



# Mold Prevention System

The NuKlear protective product system is a uniquely-designed complement of coatings that kill and inhibit the growth of microorganisms while remaining waterproof yet breathable.

The protection begins with a penetrating primer called NuKlear Saturating Primer. NuKlear SP destroys all existing toxic spores and growth leaving a residual micro-biotic for future protection. NuKlear SP contains cross linking acrylics with a catalytic cure. In addition it cross links to the cellulose in wood or paper substrates depriving harmful mold spores of food.

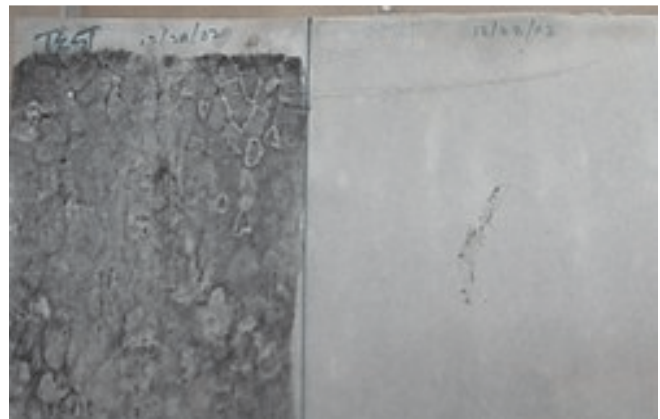
For areas likely to be exposed to frequent or prolonged moisture a NuKlear clear product seals the antimicrobial ingredients into the substrate and creates a continuous film repellent surface. The entire process is designed to provide long-lasting protection.

\* Terminates over 60 family groups of specific fungus organisms to include interior and exterior species.

\* Contains non-toxic fungicide, biocide and algaecide. Environmentally non-toxic such that the active ingredients do not require EPA registration.

\* Non leaching when top sealed. The anti-fungi system migrates continuously through the substrate and also migrates through latex paint and wall paper when NuKlear SP is used as a primer.

\* Precludes most types of algae, mildews and bacteria associated with staining of wood, painted walls, siding shingles, bricks and concrete surfaces. Fungi in the wood or boring fungi types from the exteriors can not penetrate the continuous film because of the fungicide and toughness of the coating.



**After two months in a damp environment the mold has not begun to grow on the treated right side of this piece of drywall.**

% solids by weight	Prime: 21%	Top: 42%
% acrylic	100%	
pounds per gallon	Prime: 8.5	Top: 8.6
pH	6.96 pH	
odor	low to none	
VOC's	Prime: 60 gm/L	Top: 160gm/L
dry time	touch 30 minutes	
	re-coat 30 min. - 3 hr.	
	full cure 3 - 7 days	
average film thickness (full system)	2 -4 mils.	
pencil hardness	2h	
tensile	3000 to 6000 psi	
compressive strength	6000 psi	
% elongation after cure	5% to 10%	

- \* No blistering, cracking and peeling.
- \* Water resistant even in soaking conditions. Does not support capillary action beneath the coating.
- \* UV blockers
- \* Exceptional performance in both high and low temperature environments
- \* Gas, oil and caustic resistant.

- \* Low odor and negligible VOC's; exceeds the standards of all state permissible limits. When cured NuKlear creates a hypo-allergenic surface.
- \* Self-leveling
- \* Available in clear and 5 natural wood colors. Other colors available on request.
- \* Easy clean up with just detergent and water
- \* Low viscosity easily applied with spray, roller or brush.

*WonderPaint*

**Woodburn, KY 42170**  
**www.wonderpaint.com**